

Olson Mask – REVISED 4.7.20

Materials Needed

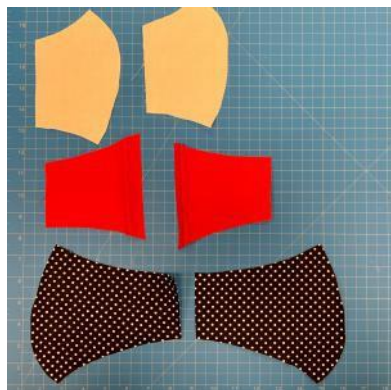


- Cotton T-shirt Material or Cotton Weave Fabric (~1/2 yard will make 2-3 masks) – WASH material to pre-shrink prior to sewing
- All-Purpose Thread
- Preferred -- 23" 1/4" Elastic or Large Elastic Hair Bands (2)
- Material for ties, ties ~ 16" long each
- Scissors, Pins, Sharpie marker

Instructions

Print Pattern at 100% for Large
90% for Medium

- 1 Using the patterns, cut one of each shape. You will need six (6) total pieces.



- 3 Sew *mouth 1* and *mouth 2* together along *side 3*.



- 2 Sew *face 1* and *face 2* together along *side 3*.



- 4 On *mouth 1* and *mouth 2* sew fold *side 5* over 1/4" and sew down.



Instructions - continued

Edited by  Avera

- 5 On *cheek 1* and *cheek 2* fold *side 6* over 1/4 inch and sew down.



- 6 Match *cheek 1* and *mouth 1* at the dotted line (7). Sew a 1-inch tack at *side 1* and *side 2* where the two pieces overlap.



- 7 Repeat Step 6 for *cheek 2* and *mouth 2*.

- 8 With the fronts of the fabric facing each other, sew along the entire perimeter of the mask.



- 9 Use one of the slits between the mouth and the cheek to turn the mask right-side out.



Instructions - continued

- 10 Add 23" of $\frac{1}{4}$ " Elastic (Preferred - as shown in picture) or hair tie to each side by folding the fabric on the end of the mask over the tie and sew down.



Note: If ties are used instead of elastic bands, ties should be approximately 16" each at upper and lower ends on both sides of mask. See below.

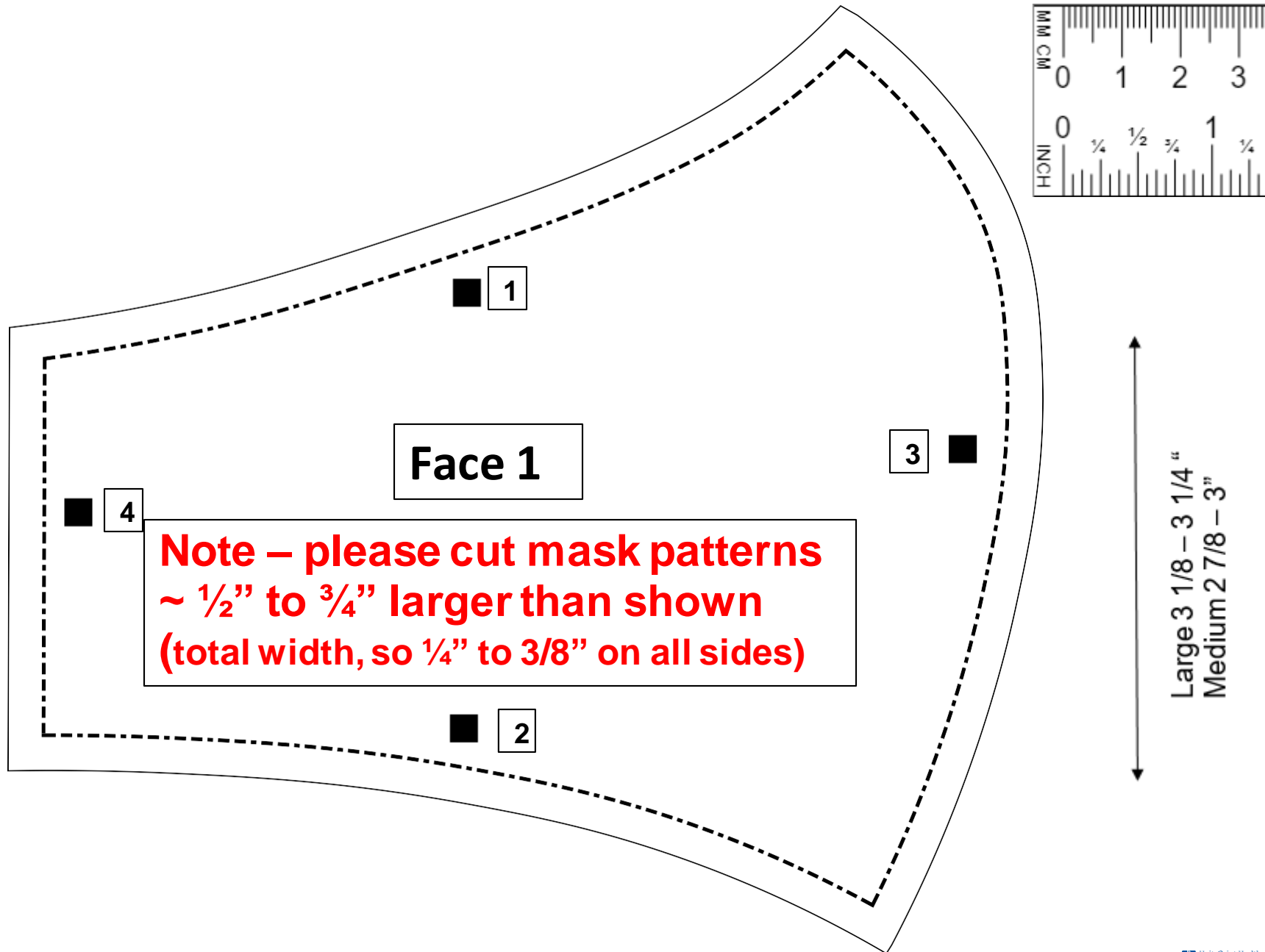


11

Write M or L on the inside (area where mouth section and Cheek sections overlap)



Olson Mask - Face Pattern

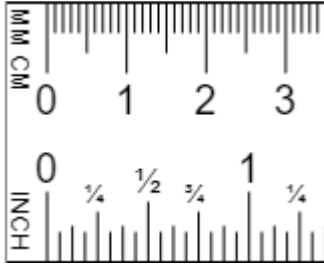
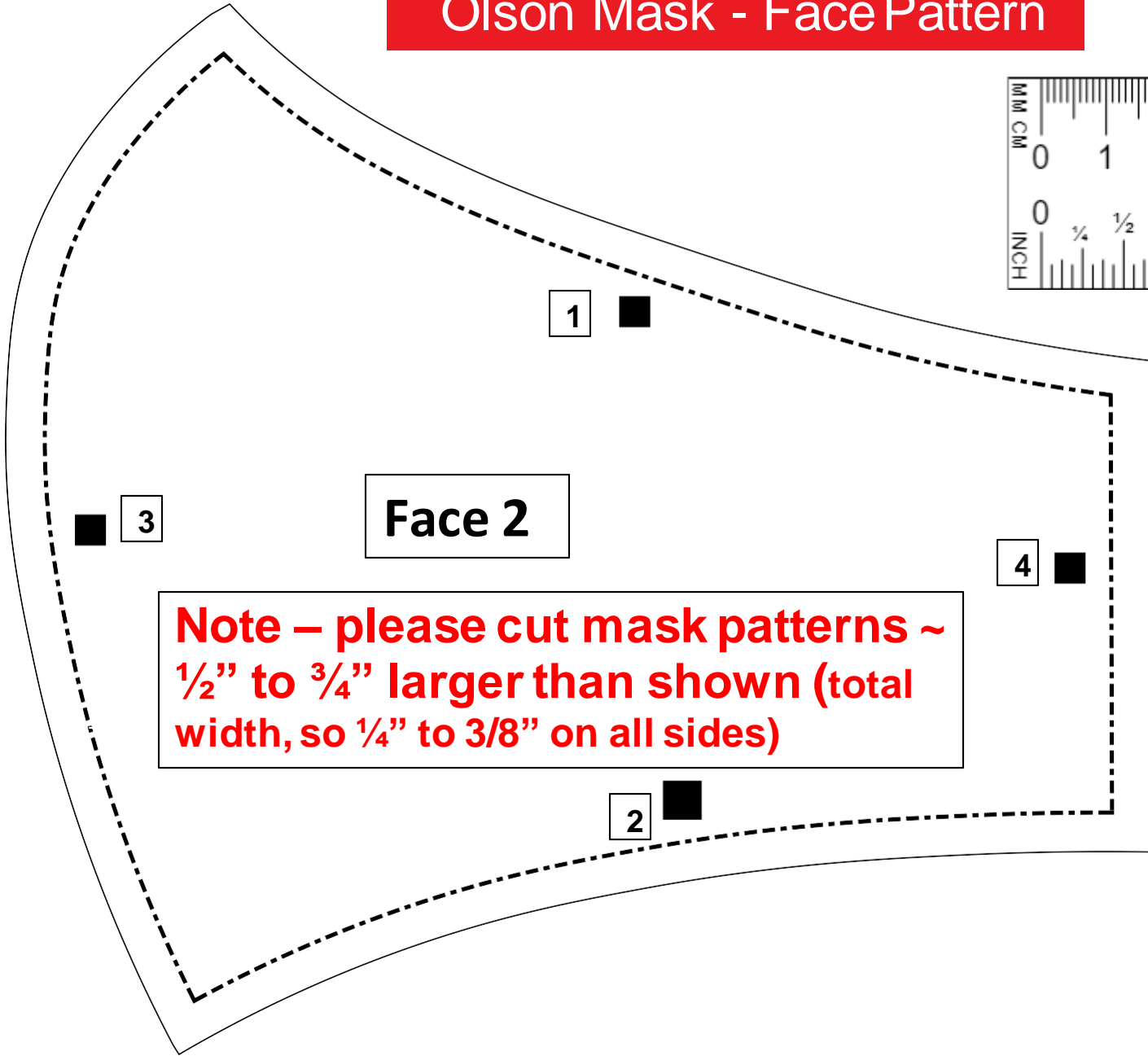


**Note - please cut mask patterns
~ 1/2" to 3/4" larger than shown
(total width, so 1/4" to 3/8" on all sides)**

Large 3 1/8 - 3 1/4"
Medium 2 7/8 - 3"



Olson Mask - Face Pattern

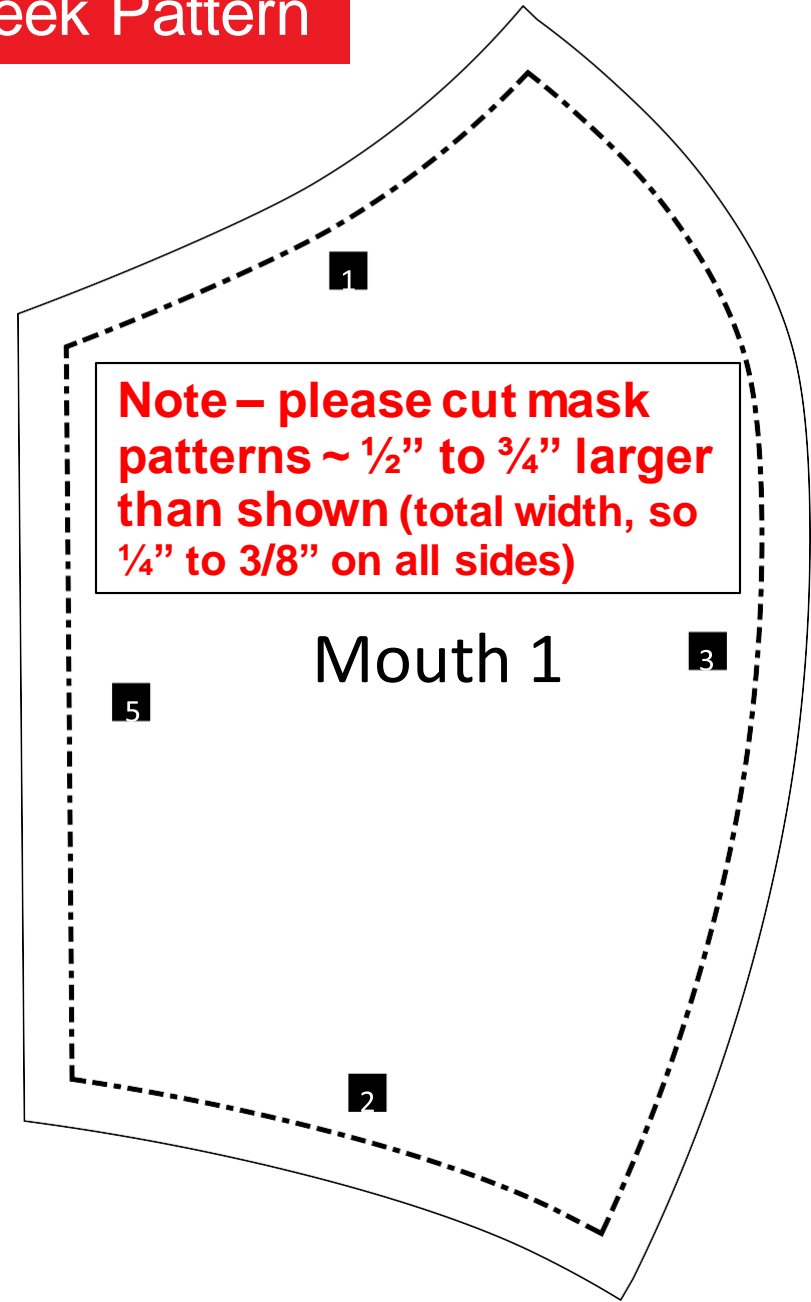
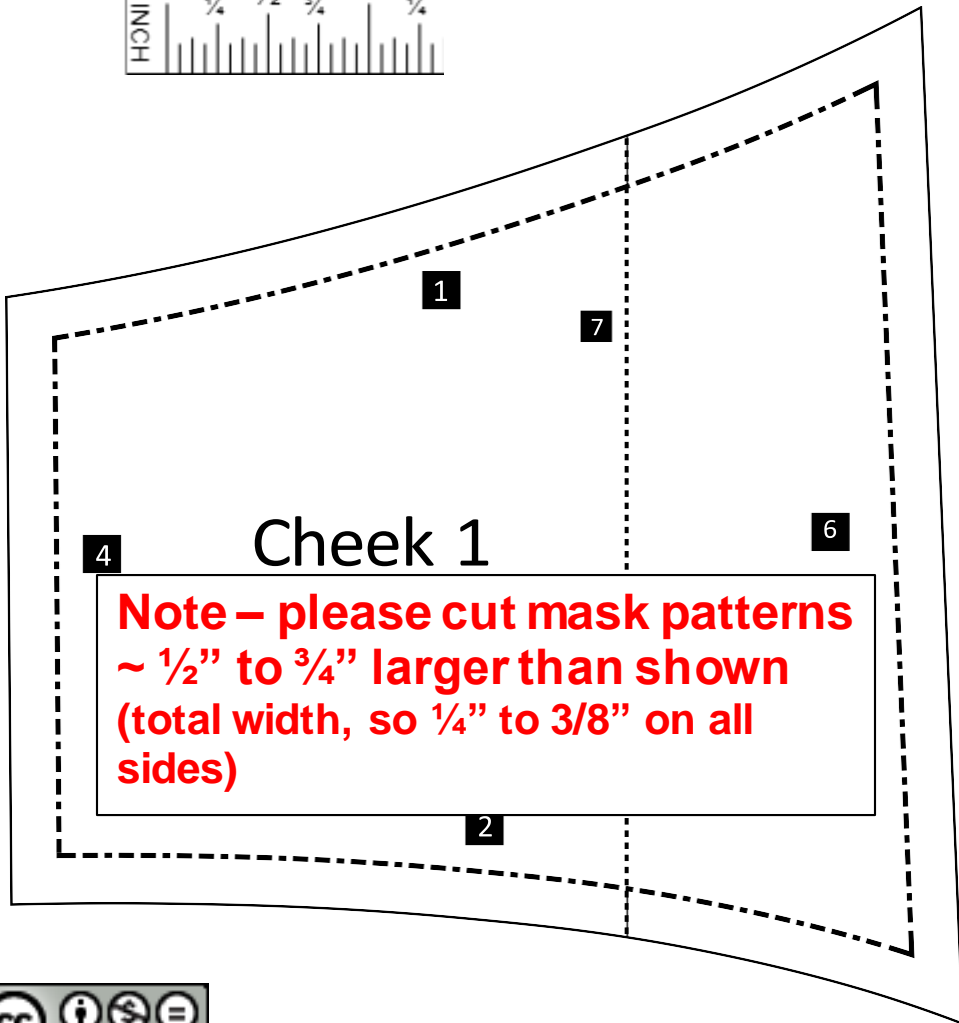
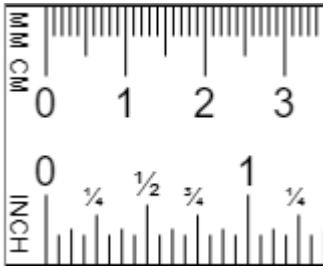


Note – please cut mask patterns ~ 1/2" to 3/4" larger than shown (total width, so 1/4" to 3/8" on all sides)

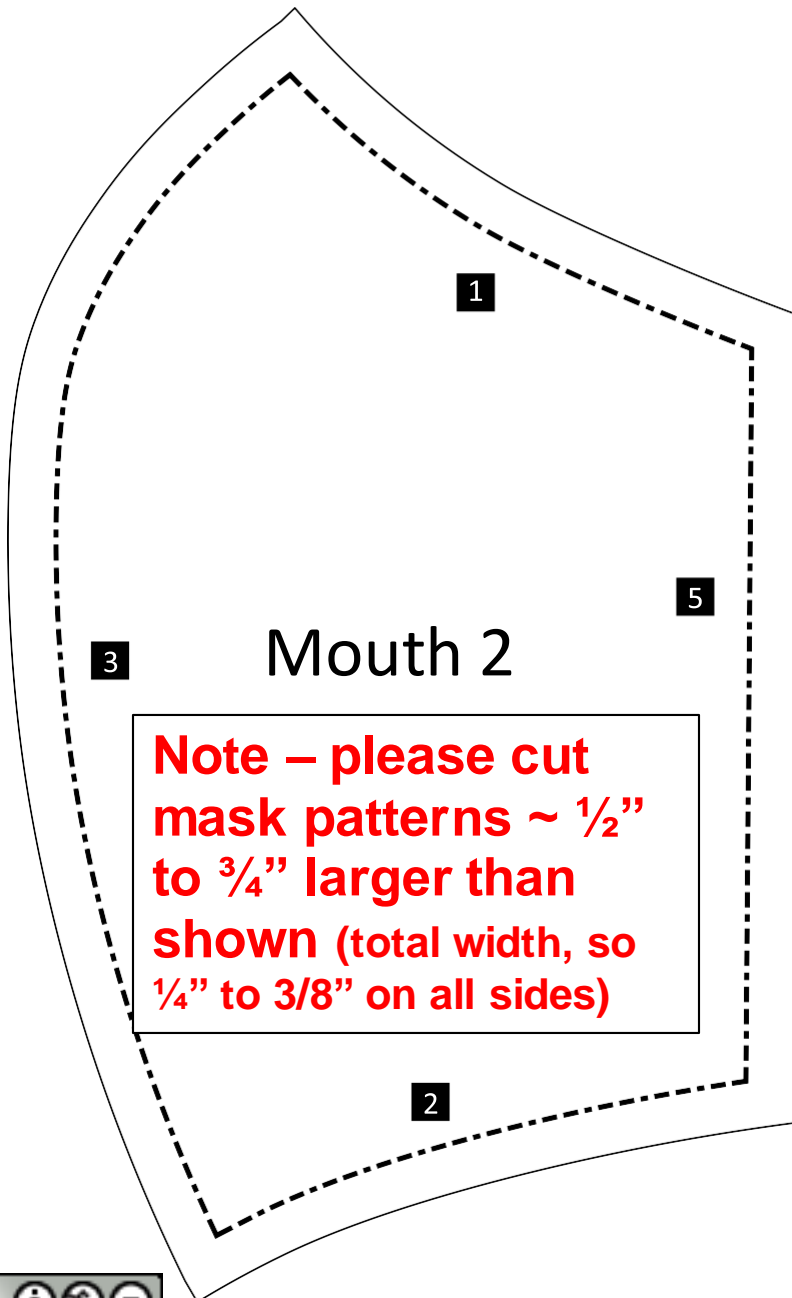
Large 3 1/8 – 3 1/4"
Medium 2 7/8 – 3"



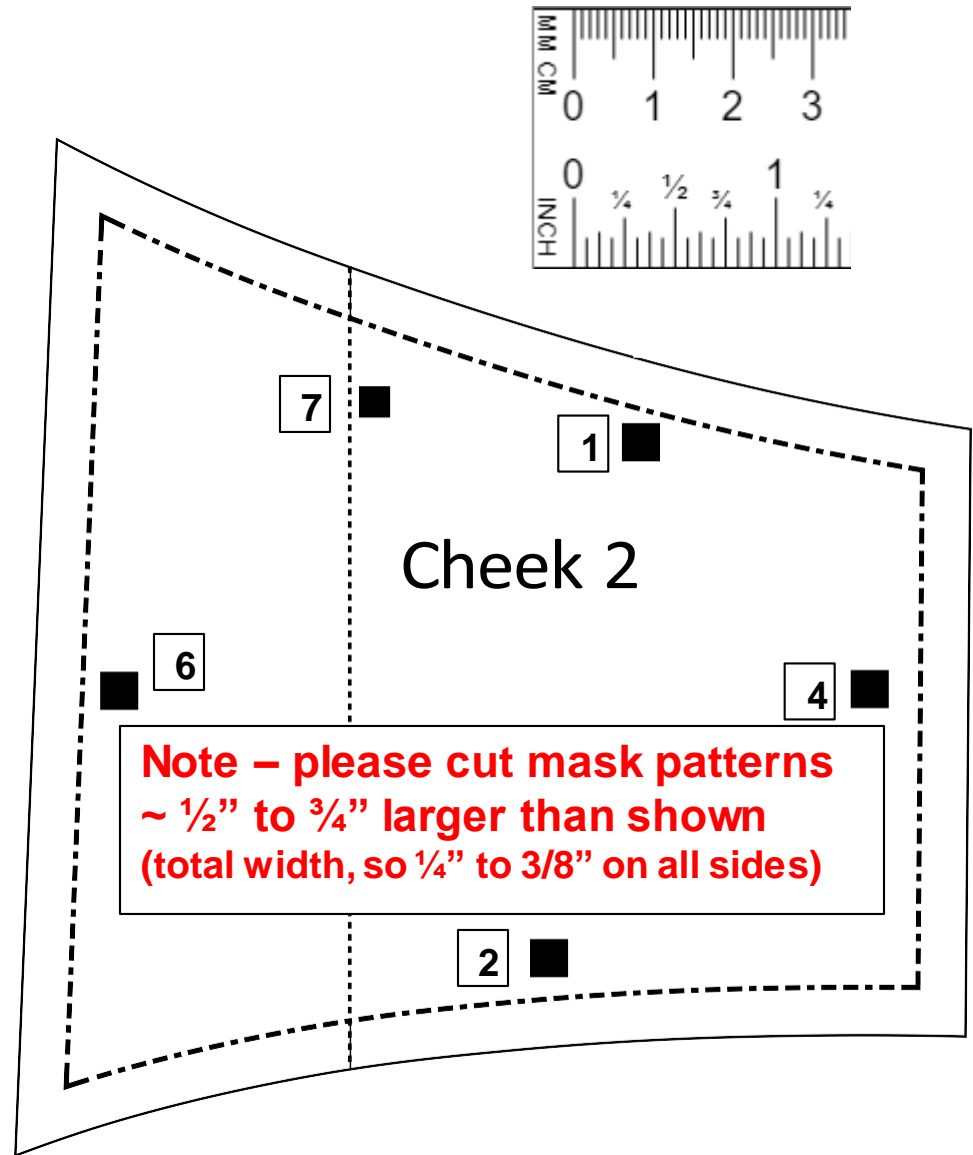
Olson Mask - Mouth & Cheek Pattern



Olson Mask - Mouth & Cheek Pattern



Note – please cut mask patterns ~ 1/2" to 3/4" larger than shown (total width, so 1/4" to 3/8" on all sides)



Note – please cut mask patterns ~ 1/2" to 3/4" larger than shown (total width, so 1/4" to 3/8" on all sides)

